

ST. THOMAS

BASS CLEF

SONNY ROLLINS

C F7 Em7 A7 Dm7 G7 C



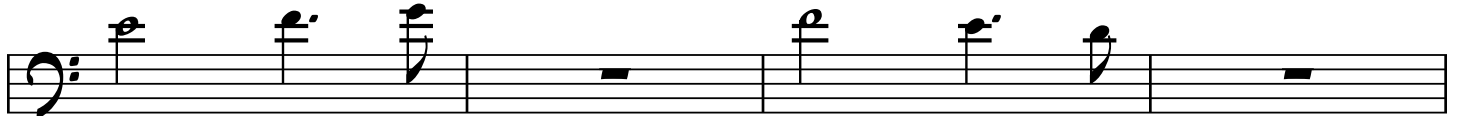
1

C F7 Em7 A7 Dm7 G7 C



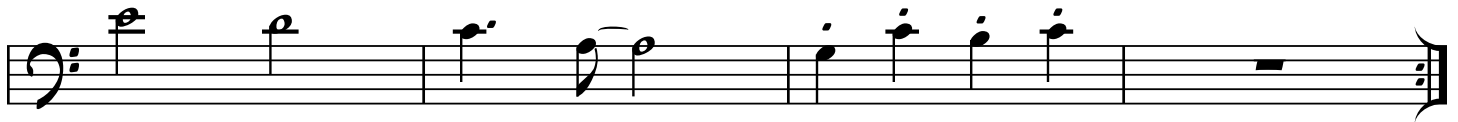
5

E \flat 7 B \flat 7 A7 \flat 9 Dm7 G7



9

C C \flat /E F F \sharp 7 C/G G C



13