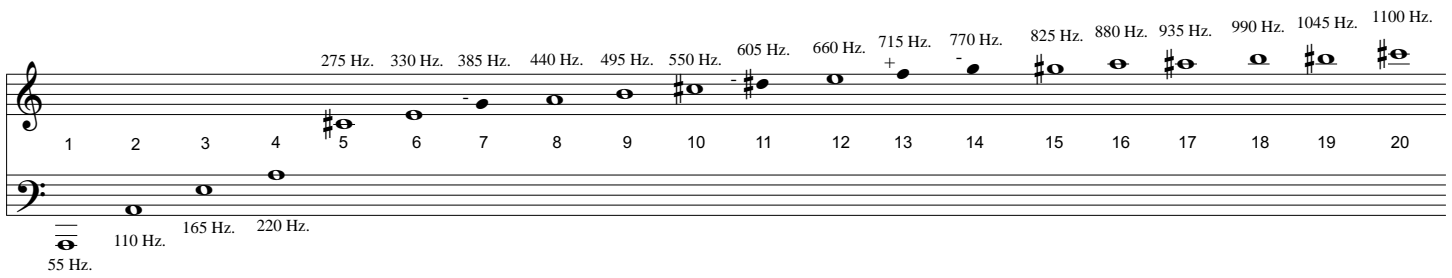


Harmonic Series for A1



The first 20 partials of a harmonic series for the fundamental pitch C2 (ca. 55 Hz.) expressed in traditional musical staff notation. Frequency (in Hertz) and frequency-multiple numbers are indicated between the staves. The - and + symbols indicate that the indicated pitch is lower or higher, respectively, than the same pitch on a modern piano.